

LAMB LEER CAVERN, West Harptree, Somerset, England

BRIEF NOTE

Lamb Leer was the first Mendip cavern to have been explored and fully documented about 1675 by John Beamont of Ston Easton. The first survey was made in 1880 by McMurtrie. For nearly two hundred years this cave held the world's recorded depth record for any cave system - 67m (220ft) !

H.E. BALCH, Wells Museum
publisher

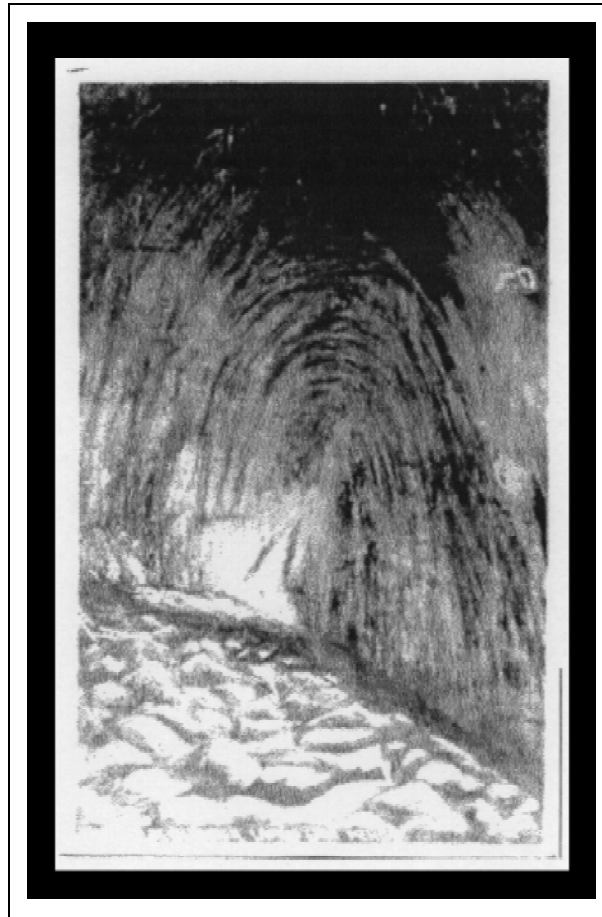
BC10 c.1930

f s.br.p; T/p(W)(l.l.)(backward sloping sans serif CAPS); ma

p Cp140 similar; p(B); PC (5mm high serif CAPS); stamp square frame only; above communication block (serif CAPS): CORRESPONDENCE; above address block (serif CAPS): ADDRESS ONLY

NOTE: The card was probably published by Wells Museum ; produced by Chapman, Dawlish, Devon.
On back of card : New Years Wishes // from // G Platten

The Great Chamber. Lambs Lair Mendip. [(V); based on drawing by H.E. Balch]



BC10