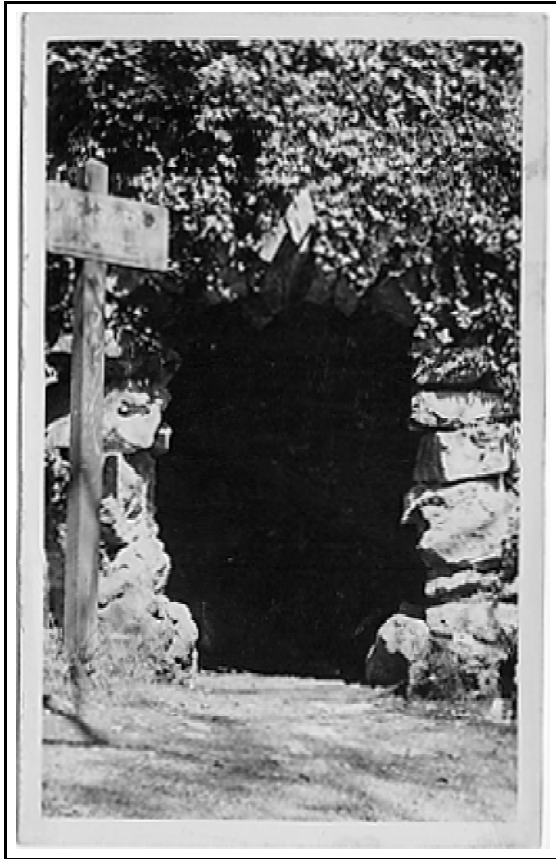


BUTCHER'S CAVE, Bristol, England



NQ10

METROPHOTOS, Downend Bristol
publisher

NQ10 c.1960

f b.w.br.p; ma

p p(B); PC (5mm high serof CAPS) below which (sans serif CAPS) : A REAL PHOTOGRAPH; I (up-centre)(sans serif CAPS) : METROPHOTOS, DOWNEND, BRISTOL.; T(1.1)(sans serif CAPS)

Butchers Cave, Blaise [(V)]

STANLEY WOOD, Sea Mills, Bristol
publisher

XB10 c.1935

f s.p.; T/m(S)(l.l.)(serif CAPS); N/m(l.r.); ma

p Hb40; p(P-Br); PC(5mm high serif CAPS); stamp square (sans serif CAPS): PRINTED // IN // ENGLAND; above communication block (serif CAPS): CORRESPONDENCE; above address block (serif CAPS): ADDRESS ONLY; I: Stanley Wood, Sea Mills, Bristol.

32086 Butchers Cave, Blaise Castle Woods. [(H)].



XB10